

Capacitive Touch Screen

Interface: USB、I2C、IPS
Suitable for mobile phones, tablet PC, gaming devices, GPS, touch monitors, etc



FC RoHS CE

Capacitive touch screen

◆ Specification

Resolution	4096 X 4096
Material	G + F / G + G / P+ G / G + F + F
Interface Type	I2C、USB、IPS
Input method	Finger or touch pen
Position accuracy	2~5mm
Voltage/ current	DC ≤ 10V 2.5~10mA
Response time	Less than 10ms
Touch action force	10~60g
Operating temperature	-10°C~65°C
Storage temperature	-20°C~80°C
Surface hardness	7H
Working environment	Under sunlight, indoor and outdoor
Transparency	92%-98%
Screen Ratio	4:3/16:9/16:10
Size	7"-17" (can customize)
The number of hits	≥35,000,000/point
Warranty	1 year
Certificates	CE, FCC, RoHS
Support Systems	Android/Mac/Windows 2000 Windows XP/Win7/WiN 8

◆ Description

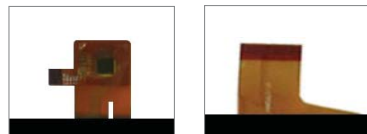
This product response time is shorter than resistive touch screen's with a good touch . It is widely used to Phone, Tablet, E-book, gaming device by hands holding ,Touch monitor, GPS, All-In-One and so on.

◆ Size (can customize)

7" 7.85" 8" 9.7" 10.1" 10.4" 12" 15" 17"

◆ Advantages

- > Wonderful appearance and good electrostatic discharge
- > No froce limited ,high transmittance
- > High definition ,water proof and fog proof
- > I2C & USB & IPS interface
- > Support Single and multi touch points to touch



电容式触摸屏

◆ 产品描述

响应时间短于电阻式触摸屏,操作性能好,适用于手机,平板电脑,电子书,手持游戏设备, GPS, 触摸显示器,一体机等领域。

◆ 主要特性

- >抗静电能力强,设计美观;
- >触摸力度非常小,高透光;
- >I2C、USB、IPS接口方式;
- >高清晰度,防水,防雾;
- >触摸力度非常小,高透光度;
- >支持单点及多点触摸。

◆ 产品尺寸(可定制)

7" 7.85" 8" 9.7" 10.1" 10.4" 12" 15" 17"

◆ 参数规格

分辨率	4096 X 4096
材料	玻璃 + 膜/玻璃 + 玻璃
接口类型	I2C、USB、IPS
触摸介质	手指, 戴手套的手, 触摸笔
触摸力度	10~60g
产品尺寸	7"-17"(可定制)
电压电流	DC ≤ 10v 2.5~10mA (根据主板IC而定)
响应时间	<10ms
产品比例	4:3/16:9/16:10
工作温度	-10° C至60° C
储存温度	-20° C至80° C
工作环境	室内/室外/阳光下
表面硬度	7H
触摸精度	2~5mm
手指触摸	≥35,000,000次
透光度	92%-98%
质保期	1年
产品认证	CE, FCC, RoHS
适用操作系统	Android/Mac/Windows 2000/Windows XP/Win7/WiN 8

