

2.4 GHz 24 dBi Die cast Grid Antenna

Application:

2.4 GHz ISM Band

IEEE 802.11b/g/n Wireless LAN Applications

WiFi Systems & Long-range Directional Applications

Point to Point Systems & Point to Multi-point Systems

Wireless Bridges, Backhaul Applications & Wireless Video Systems



Model	TDG-2425-24
Frequency Range	2400-2500 MHz
Gain	24dBi
VSWR	≤ 1.5
Polarization Type	Horizontal or Vertical
Input Impedance	50Ω
Horizontal Beamwidth	11.5°
Vertical Beamwidth	7.5°
Front to Back Ratio	30dB
Maximum Power	100W
Connector Type	2*N-female
Lighting Protection	DC Ground
Dimension	1000mm*595mm*199mm
Weight	3.5 Kg
Rated Wind Velocity	140km/h
Working Temperature	-40℃~+65℃

2.4 GHz 19 dBi Die cast Grid Antenna

Application:

2.4 GHz ISM Band

IEEE 802.11b/g/n Wireless LAN Applications

WiFi Systems & Long-range Directional Applications

Point to Point Systems & Point to Multi-point Systems

Wireless Bridges, Backhaul Applications & Wireless Video Systems



Model	TDG-2425-19
Frequency Range	2400-2500 MHz
Gain	19dBi
VSWR	≤ 1.5
Polarization Type	Horizontal or Vertical
Input Impedance	50Ω
Horizontal Beamwidth	12°
Vertical Beamwidth	16°
Front to Back Ratio	25dB
Maximum Power	100W
Connector Type	2*N-female
Lighting Protection	DC Ground
Dimension	400*600mm
Weight	1.5 Kg
Rated Wind Velocity	140km/h
Working Temperature	-40℃~+65℃

2.4 GHz 15 dBi Die cast Grid Antenna

Application:

2.4 GHz ISM Band

IEEE 802.11b/g/n Wireless LAN Applications

WiFi Systems & Long-range Directional Applications

Point to Point Systems & Point to Multi-point Systems

Wireless Bridges, Backhaul Applications & Wireless Video Systems

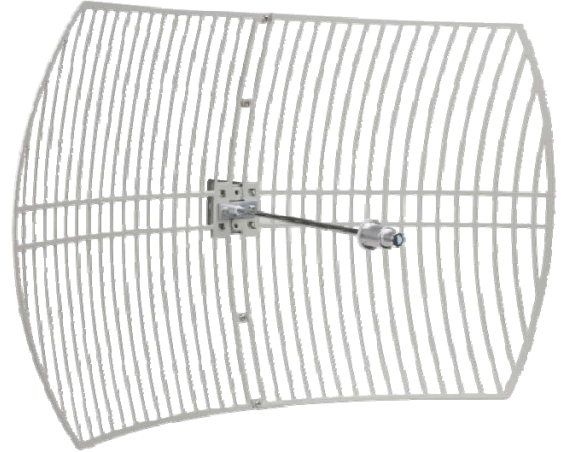


Model	TDG-2425-15
Frequency Range	2400-2500 MHz
Gain	15dBi
VSWR	≤ 1.5
Polarization Type	Horizontal or Vertical
Input Impedance	50Ω
Horizontal Beamwidth	16°
Vertical Beamwidth	21°
Front to Back Ratio	20dB
Maximum Power	100W
Connector Type	2*N-female
Lighting Protection	DC Ground
Dimension	300*400mm
Weight	1.2 Kg
Rated Wind Velocity	140km/h
Working Temperature	-40℃~+65℃

5.8 GHz 29 dBi Die cast Grid Antenna

Application:

- 5.8GHz Wireless LAN systems
- Point to Point/Point to Multi-point Systems
- Wireless Bridges
- Aluminum Die Cast Grid
- UV Stable Light Gray Powder Coat Finish
- All Weather Operation
- Easy to Assemble



Model	TDG-5158-29
Frequency Range	5150-5850 MHz
Gain	29dBi
VSWR	≤ 1.5
Polarization Type	Horizontal or Vertical
Input Impedance	50Ω
Horizontal Beamwidth	4°
Vertical Beamwidth	6°
Front to Back Ratio	25dB
Maximum Power	100W
Connector Type	2*N-female
Lighting Protection	DC Ground
Dimension	600*900mm
Weight	3.5 Kg
Rated Wind Velocity	140km/h
Working Temperature	-40℃~+65℃



5.8 GHz 27 dBi Die cast Grid Antenna

Application:

- 5.8GHz Wireless LAN systems
- Point to Point/Point to Multi-point Systems
- Wireless Bridges
- Aluminum Die Cast Grid
- UV Stable Light Gray Powder Coat Finish
- All Weather Operation
- Easy to Assemble



Model	TDG-5758-27
Frequency Range	5725-5850 MHz
Gain	27dBi
VSWR	≤ 1.5
Polarization Type	Horizontal or Vertical
Input Impedance	50Ω
Horizontal Beamwidth	6°
Vertical Beamwidth	9°
Front to Back Ratio	25dB
Maximum Power	100W
Connector Type	2*N-female
Lighting Protection	DC Ground
Dimension	400*600mm
Weight	1.5 Kg
Rated Wind Velocity	140km/h
Working Temperature	-40℃~+65℃

5.8 GHz 24 dBi Die cast Grid Antenna

Application:

- 5.8GHz Wireless LAN systems
- Point to Point/Point to Multi-point Systems
- Wireless Bridges
- Aluminum Die Cast Grid
- UV Stable Light Gray Powder Coat Finish
- All Weather Operation
- Easy to Assemble



Model	TDG-5758-24
Frequency Range	5725-5850 MHz
Gain	24dBi
VSWR	≤ 1.5
Polarization Type	Horizontal or Vertical
Input Impedance	50Ω
Horizontal Beamwidth	9°
Vertical Beamwidth	12°
Front to Back Ratio	20dB
Maximum Power	100W
Connector Type	2*N-female
Lighting Protection	DC Ground
Dimension	300*400mm
Weight	1.2 Kg
Rated Wind Velocity	140km/h
Working Temperature	-40℃~+65℃



1920-2170 MHz 21 dBi Die cast Grid Antenna

Application:

- Point to point / point to multi point Application
- Long distance communications
- Client antenna
- High gain
- Aluminum die-cast



Model	TDG-1921-21
Frequency Range	1920-2170 MHz
Gain	21dBi
VSWR	≤ 1.5
Polarization Type	Horizontal or Vertical
Input Impedance	50Ω
Horizontal Beamwidth	7°
Vertical Beamwidth	13°
Front to Back Ratio	30dB
Maximum Power	100W
Connector Type	2*N-female
Lighting Protection	DC Ground
Dimension	1000mm*595mm*199mm
Weight	3.5 Kg
Rated Wind Velocity	140km/h
Working Temperature	-40℃~+65℃