

2.4 GHz 9 dBi Yagi Antenna

Applications:

2.4 GHz ISM Band

IEEE 802.11b, 802.11g Wireless LAN

IEEE 802.11n (Pre-N, Draft-N, MIMO) Applications

Bluetooth & Public Wireless Hotspot

WiFi & Wireless Video Systems



Model	TDY-2425-9
Frequency Range	2400-2500MHz
Gain	9dBi
VSWR	≤ 1.5
Polarization Type	Vertical
Input Impedance	50Ω
Horizontal Beamwidth	56°
Vertical Beamwidth	52°
Maximum Power	100W
Connector Type	N-female or requested
Lighting Protection	DC Ground
Dimension	180x90x40mm
Weight	0.15Kg
Rated Wind Velocity	210km/h
Working Temperature	-40℃~+60℃

2.4 GHz 12 dBi Yagi Antenna

Applications:

2.4 GHz ISM Band

IEEE 802.11b, 802.11g Wireless LAN

IEEE 802.11n (Pre-N, Draft-N, MIMO) Applications

Bluetooth & Public Wireless Hotspot

WiFi & Wireless Video Systems



Model	TDY-2425-12
Frequency Range	2400-2500 MHz
Gain	12dBi
VSWR	≤ 1.5
Polarization Type	Vertical
Input Impedance	50Ω
Horizontal Beamwidth	44°
Vertical Beamwidth	40°
Maximum Power	100W
Connector Type	N Female or Requested
Lighting Protection	DC Ground
Dimension	310x80x40mm
Weight	0.2 Kg
Rated Wind Velocity	210km/h
Working Temperature	-40°C~+60°C

1560-1620 MHz 10 dBi Yagi Antenna

Applications:

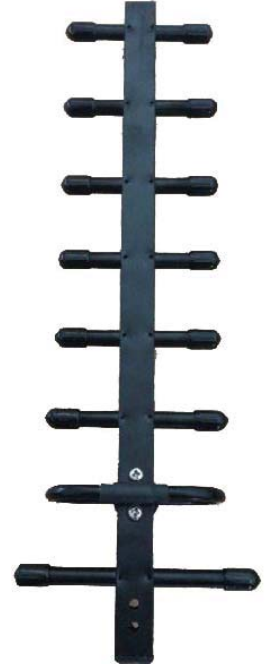
1.2GHz Band

Wireless Video Links

Wireless Security Cameras

Wireless Video Transmitters

Wireless Security Systems



Model	TDY-1516-10
Frequency Range	1560-1620 MHz
Gain	10dBi
VSWR	≤ 1.5
Polarization Type	Vertical
Input Impedance	50Ω
Horizontal Beamwidth	56°
Vertical Beamwidth	52°
Maximum Power	100W
Connector Type	N Female or Requested
Lighting Protection	DC Ground
Dimension	325x100x40mm
Weight	0.3 Kg
Rated Wind Velocity	210km/h
Working Temperature	-40°C~+60°C

806-960 MHz 12 dBi Yagi Antenna

Applications:

900MHz ISM Band & Wireless LAN systems

Point to multipoint & Non Line of Sight (NLOS) applications

900MHz Cellular and GSM

RFID & SCADA

Wireless Video Links



Model	TDY-8096-12
Frequency Range	806-960 MHz
Gain	12dBi
VSWR	≤ 1.5
Polarization Type	Vertical
Input Impedance	50Ω
Horizontal Beamwidth	44°
Vertical Beamwidth	40°
Maximum Power	100W
Connector Type	N Female or Requested
Lighting Protection	DC Ground
Dimension	800x180x50mm
Weight	0.35 Kg
Rated Wind Velocity	210km/h
Working Temperature	-40°C ~ +60°C

806-960 MHz 14 dBi Yagi Antenna

Applications:

900MHz ISM Band & Wireless LAN systems

Point to multipoint & Non Line of Sight (NLOS) applications

900MHz Cellular and GSM

RFID & SCADA

Wireless Video Links

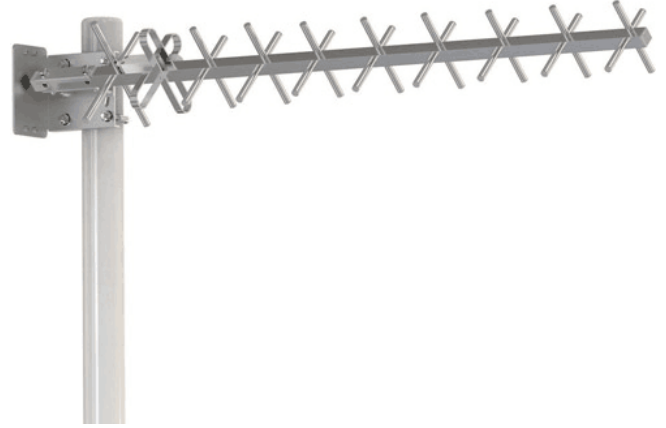
Model	TDY-8096-14
Frequency Range	806-960 MHz
Gain	14dBi
VSWR	≤ 1.5
Polarization Type	Vertical
Input Impedance	50Ω
Horizontal Beamwidth	40°
Vertical Beamwidth	36°
Maximum Power	100W
Connector Type	N Female or Requested
Lighting Protection	DC Ground
Dimension	1350x180x50mm
Weight	0.55 Kg
Rated Wind Velocity	210km/h
Working Temperature	-40°C~+60°C



902-928 MHz 12 dBi Yagi Antenna

Applications:

- 900MHz ISM Band & Wireless LAN systems
- Point to multipoint & Non Line of Sight (NLOS) applications
- 900MHz Cellular and GSM
- RFID & SCADA
- Wireless Video Links



Model	TDY-9092-12
Frequency Range	902-928MHz
Gain	12dBi
VSWR	≤ 1.6
Polarization Type	Dual Slant ±45°
Input Impedance	50Ω
Horizontal Beamwidth	45°
Vertical Beamwidth	38°
Front to back ratio	≧ 16dB
Maximum Power	100W
Connector Type	2*N Female or Requested
Lighting Protection	DC Ground
Dimension	1.1m
Weight	1.1Kg
Rated Wind Velocity	210km/h
Working Temperature	-40°C~+60°C